



EC London 30+: Student House Apartment

DESCRIPTION OF ACCOMMODATION

Spread across 2-3 floors, the properties have 5-7 bedrooms, some of which have en-suite bathroom facilities. There are single rooms as well as twin and triple rooms for sharing between students of the same gender.

There will be a maximum of 10 students but usually an average 6 per house, sharing full size bathrooms or shower rooms. Most of the properties have two communal bathrooms, some separate WCs and some houses offer en-suites.

DESCRIPTION OF LOCAL AREA

Student houses are a convenient accommodation option and they are located in a safe neighbourhood, within a short walk to the closest stations which include South Bermondsey, Surrey Quays Rotherhithe or Canada Water. All houses are in zone 2.

Shopping centre, local restaurants and entertainment areas are nearby. The location offers 24 hour buses and trains which provide easy access to all parts of central London in 30 minutes

ACCOMMODATION ARRIVAL AND DEPARTURE DAY

- Arrival day: Saturday/ Sunday: 14:00
- Departure day: Saturday/ Sunday: 10:00

PHONE NUMBER

+44 (0) 79 8377 3121

ACCOMMODATION INCLUDES

- Communal Kitchen
- Communal Lounge
- Free Wi-Fi facilities
- Bed linen provided
- Students need to bring their own towels
- Laundry Facilities

TYPE OF ROOMS

Single/ Twin with Shared and En-suite bathroom

BOARD STATUS

Self Catering

AVAILABLE

Year round

SCHOOL

[EC London 30+](#)

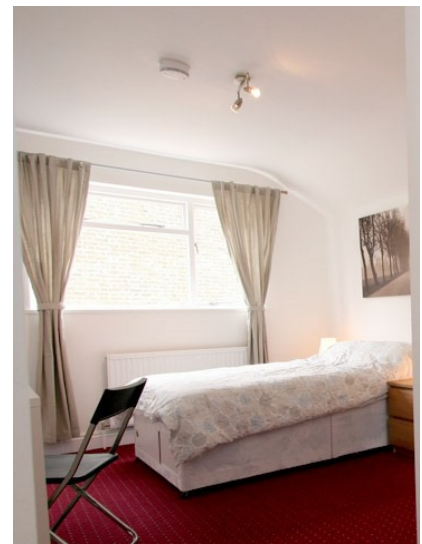
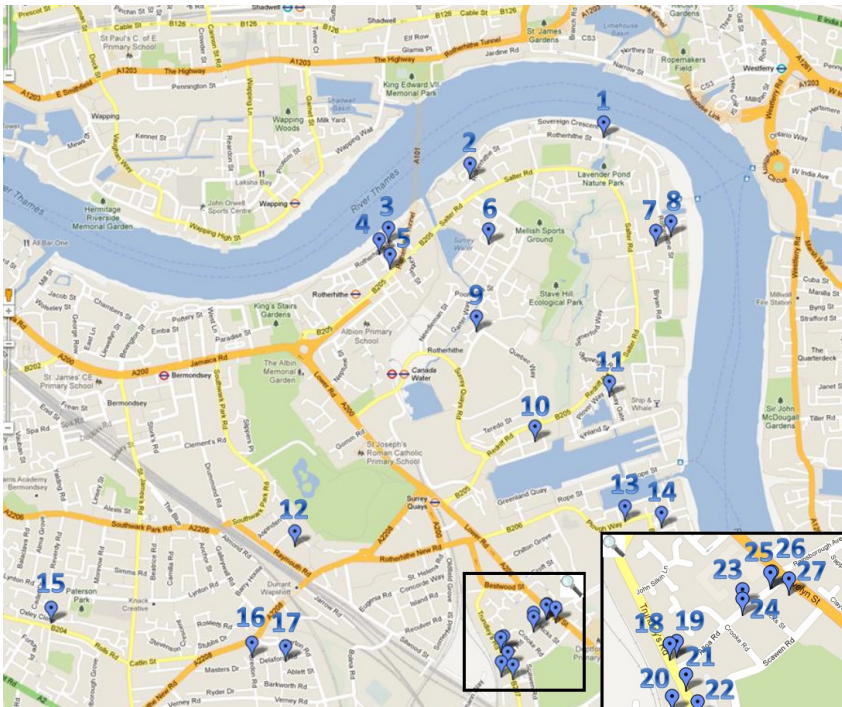


CANCELLATION PRIOR TO ARRIVAL

Students cancelling their accommodation fewer than 14 days before arrival will be charged a one week accommodation fee - charged at the standard accommodation rate and accommodation placement fee.

CANCELLATION AFTER ARRIVAL

Bookings of 7 weeks or less: No accommodation refund. Bookings of 8 weeks and over: Students must give notice in writing 4 weeks prior to termination otherwise a 4 week cancellation fee will apply.



NOTES

- EC must be notified of student arrival arrangements and expected times of arrival
- Smoking is not permitted in the residence
- You will be asked to complete an Authorisation for Damage deposit form on your first day of School, you will need your bank/credit card to complete this form.
- Mixed Gender: Male and female students share common areas and facilities, but bedrooms are single gender

