



25 YEARS

EC San Diego: Bay Pointe Shared Apartments

DESCRIPTION OF LOCAL AREA

Bay Pointe is centrally located in the beautiful Mission Bay area of Pacific Beach. One of Pacific Beach's highlights is the miles of shoreline and beaches along the Pacific Ocean, with the beach scene revolving around the historic Crystal Pier, a large pier and hotel at the west end of Garnet Avenue. The boardwalk is typically crowded with pedestrians, cyclists, rollerbladers, and shoppers, but no matter what your pleasure, there is always something happening on the beach or the boardwalk.

As the sun goes down and the tides change, "PB", as it is known by the locals, reawakens with dozens of night time hangouts coming to life. Dancing, live music, and San Diego's hottest beach bars are all within easy walk from the beach. The area boasts dozens of bars, cafes, and eateries lining the main east-West Street Garnet Avenue and Mission Boulevard, which runs north-south.

Commuters enjoy easy access to Mission Valley, Fashion Valley, the San Diego Freeway (I-5), Ocean Beach Freeway (I-8), fine restaurants, La Jolla, Sea World and the San Diego International Airport.

DESCRIPTION OF ACCOMMODATION

Bay Pointe provides resort-like living. It includes a heated Olympic-size pool, saunas, separate cardio room and weight room, basketball courts and lighted tennis courts. A front desk is open from Monday through to Saturday 9am to 5pm and Sunday 12pm to 4pm. Students are always welcome to speak to the in-house housing coordinator. Bay Pointe also has hosted water and ground aerobics, and offer movie nights in their inhouse theatre room. There are female only and male only apartments. Each apartment has 2 bedrooms and includes a spacious balcony or patio, walk-in closets, 2 bathrooms (located inside of the bedrooms), a kitchen including appliances, and air conditioning.

TYPE OF ROOMS

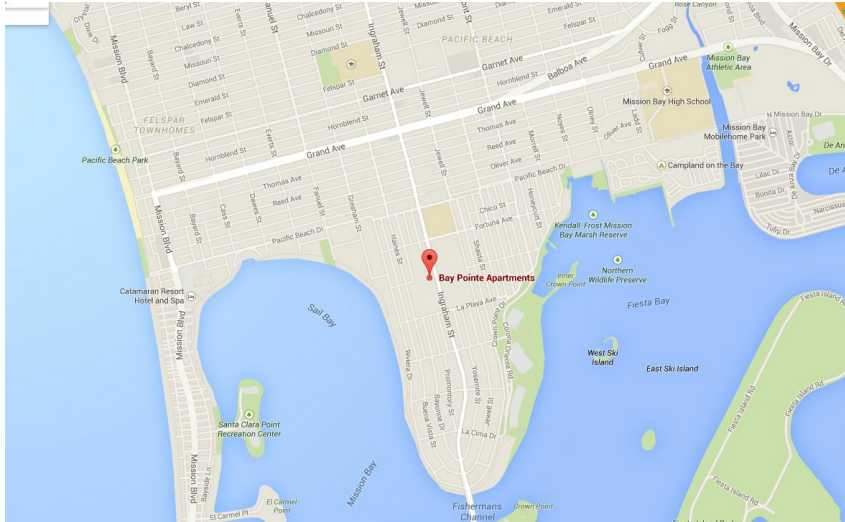
Single / Twin (2 bathrooms)

BOARD STATUS

Self-Catering

ACCOMMODATION INCLUDES

- Free Wi-Fi facilities
- Cable TV
- Fitness center
- Laundry Facilities
- Coin operated laundry facilities available
- A fully-equipped kitchen including a refrigerator, oven, dishwasher and garbage disposal
- Light maid service included once a week
- Air conditioning & ceiling fans
- Leisure program: water aerobics classes, tennis lessons and more
- Hot tub/Spa/Pool
- Business center
- Basketball and tennis courts
- Additional parking pass - \$50 (can be used during entire stay)
- Sauna
- Towels are provided



ADDRESS

Bay Pointe,
3866 Ingraham Street,
San Diego, CA 92109,
USA

EMERGENCY NUMBER

+1 (0) 858 449 3758

AVAILABLE

Throughout the year

JOURNEY TO SCHOOL

Bay Pointe is located about 45 minutes from EC San Diego by bus and about 15 minutes by car. The time from the residence to the bus stop on foot is around 4 minutes.

Directions by bus:

There is a bus stop right outside Bay Pointe. Take the number 9 bus in the direction of Pacific Beach and exit at Mission Blvd. and Hornblend Street. Take the number 30 bus in the direction of UTC/VA Hospital. Exit the bus in downtown La Jolla at Silverado Street and Hershell Ave. Turn left and walk to Girard Avenue. Turn right on Gerard & walk to the end of the Street. You will see The Living Room Café, cross the street, turn right and walk down the stairs to your left. EC San Diego's entrance is across the plaza.

Students can purchase a bus pass from several supermarkets, the rates may vary but usually start from \$5 a day or \$72 per month.

Directions by car:

Head North on Ingraham Street towards Pacific Beach Drive. Continue on Foothill Blvd. leading into Turquoise Street. The street turns slightly to the right leading in La Jolla Blvd. Follow La Jolla Blvd. all the way to Prospect Street, taking a right at the La Jolla Blvd and Prospect Street intersection. EC San Diego is located at the intersection of Prospect and Girard Avenue, at 1012 Propsect Street. Our school can be difficult to see from street level, so look for the Living Room Coffee House and the school is located just downstairs from the café.

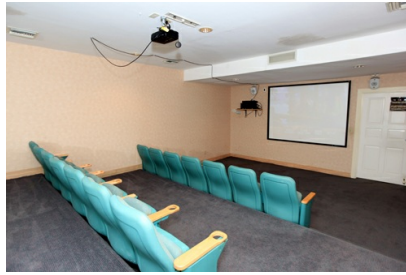
ACCOMMODATION ARRIVAL AND DEPARTURE DAY

- **Arrival Day:** Saturday
- Check in time: Saturday 4 pm
- **Departure Day:** Saturday
- Check out: Saturday 11 am
- Other dates may be available upon request.

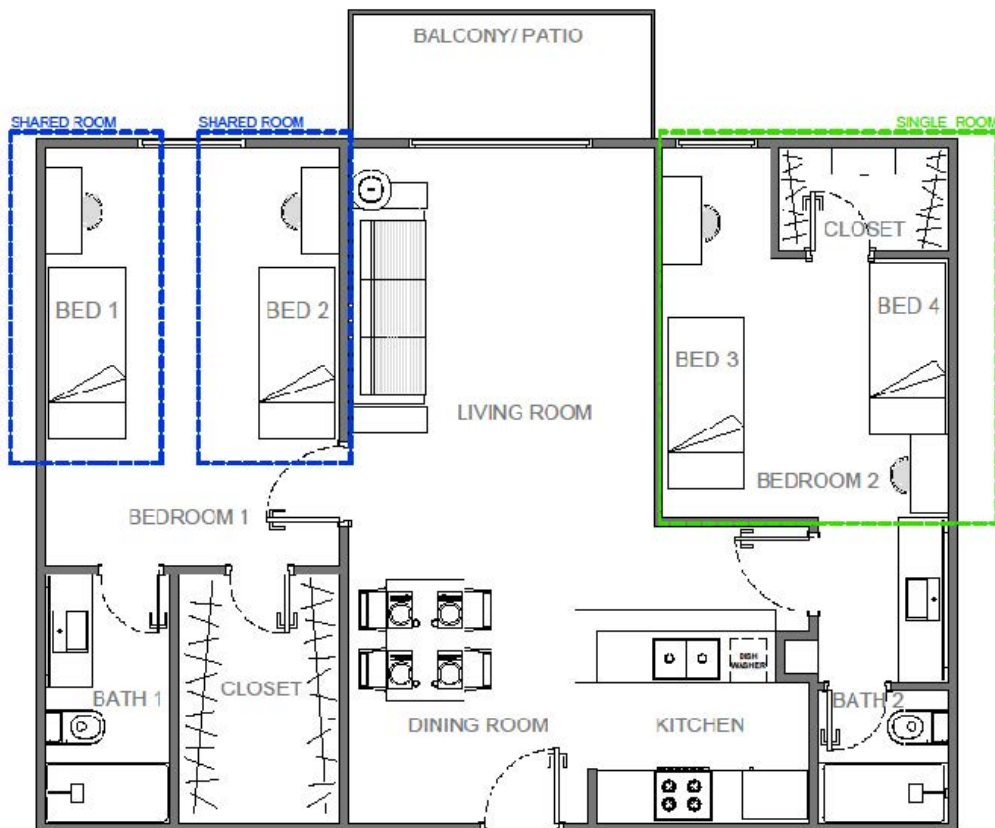
NOTES

- A \$150 security refundable deposit, payable by credit card, is required upon arrival. Should no damage to property be encountered upon inspection, students will be refunded after their departure.
- Smoking is prohibited indoors, by the pools and in common areas. Students can smoke on the balcony only.
- The complex accepts students aged 18+.
- All bedrooms have locking doors
- Shared apartments are not co-ed; apartments are either all female or all male





BAY POINTE APARTMENTS
SHARED APARTMENTS SAMPLE* LAYOUT (SINGLE VS. SHARED ROOM)



*THIS IS A SAMPLE LAYOUT FOR UNDERSTANDING ROOM ASSIGNMENT ONLY. THE LAYOUT CAN VARY ACCORDING TO AVAILABILITY AT THE TIME OF BOOKING